

# Eliminate Drug and Alcohol Abuse at your Workplace with Pathtech



## Pathtech Workplace Drug and Alcohol Detection Range

June 2022

Contact the Pathtech team  
Phone 1800 069 161 | Email [drugwipe@pathtech.com.au](mailto:drugwipe@pathtech.com.au)  
[pathtech.com.au/products/drug-alcohol-testing/](https://pathtech.com.au/products/drug-alcohol-testing/)



**Pathtech**<sup>™</sup>  
*First Choice In Science*

# Up to 15%

of workplace injuries worldwide are attributable to drug and alcohol use



# Around 60%

of individuals who consume drugs and alcohol at harmful levels are in full time employment



Alcohol and other drugs cost Australian workplaces an estimated

# \$6 billion

per year in lost productivity

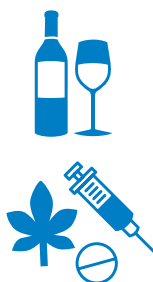


Half of Australian workers drink at harmful levels,

# 13%

 use cannabis

# 4%

 use amphetamines

# 1 in 10

workers says they have experienced the negative effects associated with a co-worker's misuse of alcohol



Under the duty of care provisions in the OH&S Act, Employers must provide a safe workplace for their employees. One of the most effective ways that employers can deal with potential drug and alcohol abuse and protect their employees is to develop and implement a workplace drug and alcohol policy.

### Pathtech can help

Pathtech empowers employers to identify and eliminate the use of drugs and alcohol in the workplace by offering the very best detection devices available in the market.

**This includes Australia's number 1 selling saliva screening device, the Securetec DrugWipe®**, which Pathtech supply to the Australian Police jurisdiction for random roadside drug screening ("Drug Buses"). Our expansive and high quality range also includes the Securetec Surface Testing DrugWipes, the Securetec WipeAlyser, Intoximeter Breathalysers and Urine Test Cups.

Our devices can be used as part of an internal "in-house" testing program, or alternatively, provided for use by an existing testing provider.

The Pathtech Team will work closely with you to identify which device best suits your requirements. Our team of dedicated experts will assess your business and make a considered and informed recommendation. We then provide detailed product training, and continued after sales support.

With existing clients that include government departments, mining, manufacturing, building, construction and customs, you can be confident in Pathtech's experience and dedication to providing the very best devices to create safe, drug and alcohol free workplaces.

1. Australian Drug Foundation. Drug Info- Alcohol and Drugs in the Workplace.  
2. Guidelines for Drugs, Alcohol and The Workplace. WorkCover Corporation of South Australia.

# The Pathtech Device Range

Pathtech are able to supply saliva or urine based drug detection screening devices and breath alcohol breathalysers. Each device has unique benefits, which are featured in the table below:

Method	Collection	Device	Detection Time	Drugs / Alcohol Detected	Key Benefits
Saliva	Involves collection of a sample of saliva from inside the mouth using a swab or similar	Securetec DrugWipe (page 6)	5-8 minutes	Amphetamines / Methamphetamines, Cannabis (THC), Cocaine, Opiates, Benzodiazepines (6S only) and Ketamine (6S Ketamine only)	<ul style="list-style-type: none"> <li>▶ As used by the Australian Police for roadside drug screening</li> <li>▶ Requires only a small amount of saliva (wipe down tongue)</li> <li>▶ Ease of sample collection</li> <li>▶ Overall reliability greater than 95%</li> <li>▶ Ability to detect even small doses of cannabis</li> <li>▶ WipeAlyser device also available to analyze results from DrugWipe</li> </ul>
Urine	Involves the employee producing a urine sample into a sterile tamper proof container	Urine Test Cups (page 8)	2 minutes	Amphetamines / Methamphetamines, Cannabis (THC), Cocaine, Opiates or Morphine & Benzodiazepines  14 panel cup: Cannabis (THC), Cocaine, Amphetamine, Methamphetamine, Benzodiazepines, Buprenorphine, Methadone, Oxycodone, Phencyclidine, Morphine, Ecstasy, Ketamine, K2 Synthetic Cannabinoid and Fentanyl	<ul style="list-style-type: none"> <li>▶ Simple and easy to use. Single step</li> <li>▶ Build in specimen validity test to defeat specimen adulteration</li> </ul>
Breath	Involves the employee exhaling into a usually hand held breathalyser	Intoximeter Breathalysers (page 12)	Less than 1 minute	Alcohol	<ul style="list-style-type: none"> <li>▶ Over 70 years experience</li> <li>▶ Light and ergonomic</li> <li>▶ Certified to Australian Standards AS3547</li> </ul>
Surface	Involves using a swab to wipe a surface	Securetec DrugWipe (page 9)	8 minutes	Amphetamines / Methamphetamines, Cannabis (THC), Cocaine & Opiates	<ul style="list-style-type: none"> <li>▶ Trace detection on all surfaces</li> </ul>

The Pathtech Drug Detection Team will work closely with you to determine the very best detection device or devices based on the requirements of your workplace.

# Saliva versus Urine?

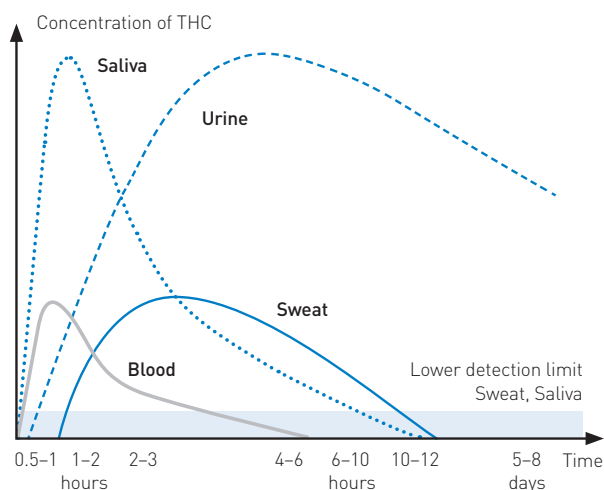
## Which is best for your Workplace?

	Saliva	Urine
<b>Drugs that can be detected</b>	<ul style="list-style-type: none"> <li>Amphetamines / Methamphetamines, Cannabis (THC), Cocaine, Opiates &amp; 6S only Benzodiazepines</li> </ul>	<ul style="list-style-type: none"> <li>Cannabis (THC), Cocaine, Amphetamine, Methamphetamine, Benzodiazepines, Buprenorphine, Methadone, Oxycodone, Phencyclidine, Morphine, Ecstasy, Ketamine, K2 Synthetic Cannabinoid and Fentanyl</li> </ul>
<b>Detection time-frames</b>	<ul style="list-style-type: none"> <li>Detects recent drug use – up to 24 hours</li> <li>Provides a result in 8 minutes</li> </ul>	<ul style="list-style-type: none"> <li>Detects drugs taken in the last 1–5 days</li> <li>Provides results in 1–2minutes</li> </ul>
<b>Testing procedure</b>	<ul style="list-style-type: none"> <li>Requires a wipe down the tongue – only small volume of saliva is required</li> <li>Least invasive test method</li> </ul>	<ul style="list-style-type: none"> <li>Involves the employee producing a urine sample into a sterile tamper proof container</li> </ul>
<b>Ease of sample collection</b>	<ul style="list-style-type: none"> <li>Samples are easily collected. Very little chance of sample adulteration</li> </ul>	<ul style="list-style-type: none"> <li>As per Australian Standards – sample collection must be witnessed</li> </ul>
<b>Applications</b>	<ul style="list-style-type: none"> <li>Random, reasonable cause, post accident and post rehabilitation testing</li> <li>Provides an indication of recent drug use or whether “fit for work”</li> </ul>	<ul style="list-style-type: none"> <li>Pre employment, random, reasonable cause, post incident and post rehabilitation testing</li> <li>Provides a history of drug use</li> </ul>

### Testing Methods:

#### Time windows for detection of Cannabis / THC

Subject to the moment of testing after the consumption



Test results	0.5-1 hrs	1-2 hrs	2-3 hrs	4-6 hrs	6-10 hrs	10-12 hrs	5-8 days
Saliva	+	+	+	+	-	-	-
Sweat	-	+	+	+	+	+	-
Urine	-	+	+	+	+	+	+
Blood	+	+	+	-	-	-	-

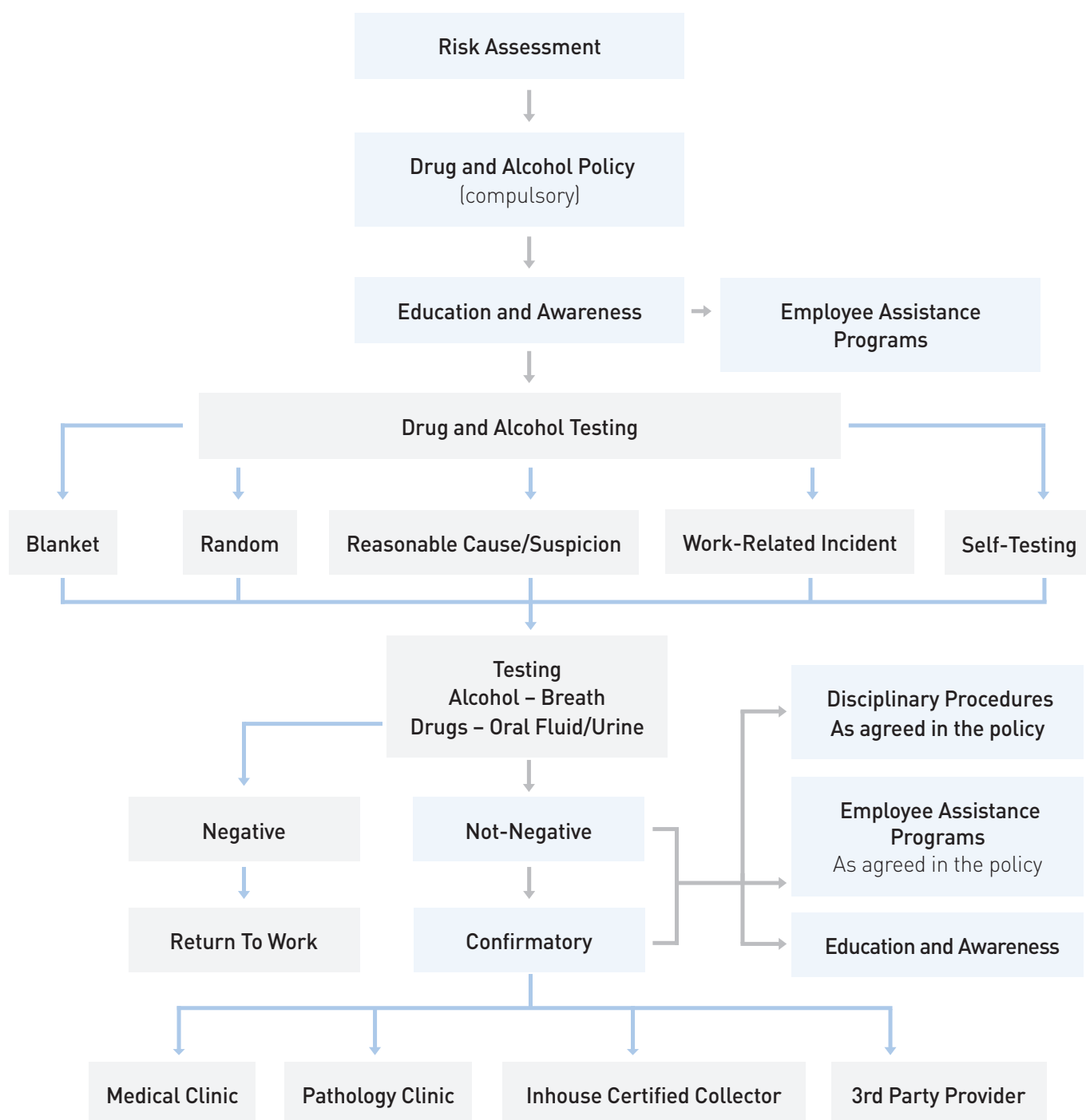
These results are guidelines which can vary depending on individual constitution, quality, frequency and intensity of consumption.

Drug Class	Saliva	Urine
<b>Methamphetamines/Amphetamines</b> Ice, Ecstasy, Speed, MDMA	Up to 1 – 2 days	Up to 1 - 4 days
<b>Cocaine</b>	Up to 1 – 2 days	Up to 1 - 4 days
<b>Opiate</b> Heroin, Morphine, Codeine	Up to 1 day	Up to 1 – 2 days
<b>Benzodiazepines</b> Anti-Anxiety Medication (Valium, Xanax, Diazepam)	Up to 1 day	Up to 2 – 4 days
<b>Cannabis</b> Marijuana/THC	Up to 6 – 12 hours	Up to 5 – 50 days

The Pathtech Team recommends saliva based devices as a preferred method to detect potential drug abuse at your workplace.

- Saliva drug testing can detect drugs anytime, from immediately after the most recent use to up to 24 hours after use. By comparison, urine cannot accurately determine if drug use was recent or days prior, therefore making saliva superior for post-incident testing.
- Saliva testing is easier and not prone to adulteration. The collection procedure is also less invasive than other forms of drug testing.

# A guide to the development of a workplace drug and alcohol testing program



# Saliva Drug Testing

## Securetec DrugWipes

### Key features:

- › Number 1 selling saliva testing device in Australia
- › Device used by Australian Police jurisdictions for roadside drug screening
- › Easy to use, no handling of saliva
- › The DrugWipe is used by many workplaces
- › Detects current and recent drug use
- › Requires only a small amount of saliva – just a wipe down the tongue to test
- › Fast test results – available in 5-8 minutes
- › Accurate, with an overall reliability greater than 95%
- › Ability to detect even small traces of Cannabis, with detection levels for cannabis / THC at 5ng/ml and 10ng/ml
- › Easy to read – has a distinctive test line which appears upon the presence of drugs, with a built in control line
- › Up to 24 month expiry on devices
- › WipeAlyser device also available to help analyze results from the DrugWipe

Pathtech are able to supply 4 different Securetec DrugWipes® based on the specific drugs your workplace want to test for.

## DrugWipe® S – Saliva Tests

The results of traffic checks internationally confirm the sensitivity, specificity and accuracy of the DrugWipe 5S and 6S detection devices. In particular, this can be seen after evaluating a large deployment of saliva drug testing (Nature One, Germany 2011):

Types of drugs		Can	Amp/Met	Coc	Opi
Sensitivity	[%]	94	100	100	100
Specificity	[%]	100	99	98	100
Accuracy	[%]	98	99	98	100

# Saliva Drug Testing



## DrugWipe 5S - 8 Minute Test

Product Code: 173-S502G

For the detection of Amphetamines / Methamphetamines, Cannabis THC, Cocaine and Opiates



## DrugWipe 5S - 5 Minute Test

Product Code: 173-S505G

For the detection of Amphetamines / Methamphetamines, Cannabis THC (5ng/ml), Cocaine and Opiates



## DrugWipe 6S - 8 Minute Test

Product Code: 173-S603G

For the detection of Amphetamines / Methamphetamines, Cannabis THC, Cocaine, Opiates and Benzodiazepines



## DrugWipe 6S - 8 Minute Test (Ketamine)

Product Code: 173-S602

For the Detection of Amphetamines / Methamphetamines, Cannabis THC, Cocaine, Opiates and Ketamine

## Confirmatory Testing

### Oral Fluid Collection Pack

Product Code: 220.PAT102C.PACK

These kits are used for the collection and transportation of a saliva specimen to the laboratory for confirmatory analysis. Included in the kit:

- › 2x Buffer Tubes
- › 2x Collections Pads
- › Instructions for use



# WipeAlyser Analysis Device

The WipeAlyser is a handheld portable analysis device for detecting drugs when used in combination with the DrugWipe, providing an ideal drug screening tool for your workplace.

## Key features:

- › Robust design suitable for both indoor and outdoor use – with shock and splash proof protection
- › Hand-held and ergonomic – weight 800grams
- › Long battery life
- › Vivid touch screen
- › Integrated printer for quick documentation
- › Doesn't require a computer/laptop – completely mobile
- › Intuitive operation to guide you through the analysis and interpretation of results, see example below:



**Analysis is being executed**

Timer

3 min 45 s

Skip

**Result**

CA Neg.  
AM/MET Pos.  
CO Neg.  
OP Pos.

View image

CL TL TL

Data input

**Data entry 1/2**

File number

Mr  Mrs

Title  ▼

First name

Last name

Date of birth  ▼  ▼  ▼

Back Next

**Data entry 2/2**

Identity card no.

Drivers license ID

Tested by

Comment

Back Next



# Urine Drug Testing



## DrugScreen 6 Panel Test Cup

Product Code: 359-CUP-MDT-6P

Assists in the detection of a full range of substances including Amphetamines / Methamphetamines, Cannabis (THC), Cocaine, Opiates & Benzodiazepines.

- › Easy to use - one step
- › Urine Samples with cut-offs complying to AS4308:2008 standards
- › Screens for 6 drugs along with 6 adulterants, with inbuilt temperature strip.
- › Fast urine test, results typically ready in 1-2 minutes.
- › Built-in extraction ports make sending a specimen to the laboratory easier and cleaner
- › Cost effective



## DrugScreen 14 Panel Test Cup

Product Code: 359-CUP-MDT-14P

Assists in the detection of a full range of substances including Cannabis (THC), Cocaine, Amphetamine, Methamphetamine, Benzodiazepines, Buprenorphine, Methadone, Oxycodone, Phencyclidine, Morphine, Ecstasy, Ketamine, K2 Synthetic Cannabinoid and Fentanyl.

- › Easy to use - one step
- › Urine Samples with cut-offs complying to AS4308:2008 standards
- › Screens for 14 drugs along with 6 adulterants, with inbuilt temperature strip.
- › Fast urine test, results typically ready in 1-2 minutes.
- › Cost effective



## InnoScreen 6 Panel Urine Tilt Test Cup

Product Code: 028-Inno6cupAU

Assists in the detection of a full range of substances including Amphetamines / Methamphetamines, Cannabis (THC), Cocaine, Morphine & Benzodiazepines.

- › Simple and easy to use. Collect the sample and replace the lid
- › Provides results in 2 minutes
- › Built in specimen validity to detect specimen adulteration
- › Certified to Australian Standards (AS4308:2008)

# Surface Drug Testing

The Securetec DrugWipe 1A and 5F Surface Testing Devices can detect the presence of illegal substances on surfaces, making them an ideal screening tool for residential and commercial properties, workplaces, vehicles and more.

## DrugWipe 1A

For surface detection of Amphetamines, Methamphetamines and Ecstasy.

- › Easy to use
- › Provides a visible, qualitative result within 8 minutes
- › Accurate
- › Ideal for meth testing of properties, cars and workplaces



## DrugWipe 5F

For surface detection of Cannabis, Opiates, Cocaine, Amphetamines, Methamphetamines and Ecstasy

- › Provides a visible, qualitative result within 8 minutes
- › Currently used by Australian Customs



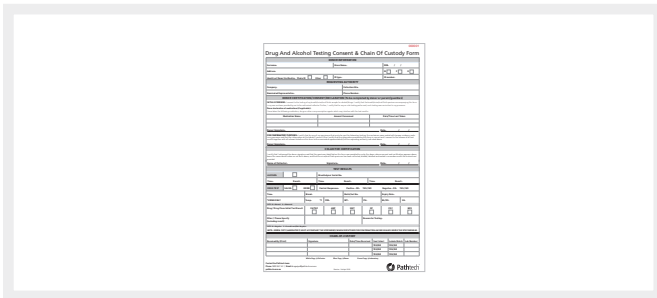
## Property Screening Pack

Designed to help detect the presence of Methamphetamines (Ice) in residential properties, the Property Screening Pack is available with x 5 or x 10 DrugWipe 1A Surface Testing devices and includes:

- › Pathtech Cooler Bag (Fits your DrugWipes, Accessories and Paperwork)
- › Quick Reference Training Guide
- › 2 x pairs of Nitrile Gloves
- › x 2 or x 3 Underpads
- › x 5 or x 10 Carboard Cut-Outs (10cm x 10cm)



# Drug Testing Accessories



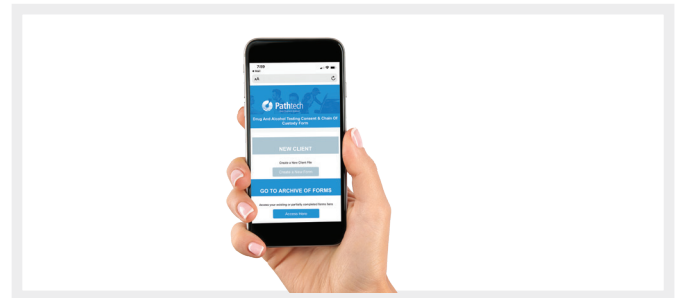
## Chain of Custody Consent Form Book

Product Code: 220-DRCOFC

Chain of Custody / Consent Form are used widely across organisations for recording drug test results and obtaining donor consent. The forms come in triplicate and are individually numbered.

Each book is made up of 100 test pages printed in triplicate. It also includes spaces for recording drug, alcohol and urine test results.

- › COC Form Records
- › Donor details
- › Donor ID
- › Medical declaration
- › Donor consent (signature)
- › Requesting party details including NCR (Nominated Company Representative)
- › Collector details (signature)
- › Test results (breath / alcohol / urine)
- › Secondary test results (if applicable)



## Chain of Custody Online Portal

Product Code: 220-COCAPP

Available exclusively to our Pathtech Customers

- › Electronic platform to complete chain of custody form
- › Easy to use, smart phone, PC and tablet friendly
- › Ability to sign digitally and upload a photo of the test
- › Compatible for Saliva, Urine and Breath Alcohol Testing
- › Saves on paper wastage
- › Available anytime anywhere
- › Unique log in per employee to tracks tests
- › Ability to store results online, send via email or print
- › Unlimited tests available
- › Secure distribution of information
- › Improves efficiency of drug testing procedures

## The Pathtech GO-PACK

Product Code: 220-DDSGO

Drug Testing On-The-Go!

When travelling or testing on-site we know it makes life a whole lot easier to have everything in one place. Ask our Team for more information.



# Drug and Alcohol Starter Kits

## Drug and Alcohol Starter Kits

### Key features:

- › Ideal for workplaces looking to introduce drug and alcohol screening for the first time or for small to medium sized workplaces testing in smaller numbers
- › Offer great cost savings when compared to purchasing single devices
- › Includes our most popular Intoximeter Breathalyser (Alco-Sensor FST) and either saliva or urine based drug screening devices

### Drug and Alcohol Starter Kit – Saliva 5S

- › For the detection of Alcohol, Cannabis, Opiates, Cocaine, Amphetamines / Methamphetamines via a saliva sample
- › Starter Kit includes: 10 x saliva DrugWipe 5S, 1 x Intoximeter FST Breathalyser and 100 x Intoximeter FST Mouthpieces

### Drug and Alcohol Starter Kit – Saliva 6S

- › For the detection of Alcohol, Cannabis, Opiates, Cocaine, Amphetamines / Methamphetamines and Benzodiazepines via a saliva sample
- › Starter Kit includes: 10 x saliva DrugWipe 6S, 1 x Intoximeter FST Breathalyser and 100 x Intoximeter FST Mouthpieces

### Drug and Alcohol Starter Kit – Urine

- › For the detection of Alcohol, Cannabis, Morphine, Cocaine, Amphetamines / Methamphetamines and Benzodiazepines via a urine sample
- › Starter Kit includes 25 x Innoscreen 6-panel cups, 1 x Intoximeter FST Breathalyser and 100 x Intoximeter FST Mouthpieces



**Drug and Alcohol Starter Kit**

Product Code: 220-DATSKS5S or 220-DATSKS6S



**Drug and Alcohol Starter Kit – Urine**

Product Code: 220-DATSKU6

# Breathalyser Alcohol Testing



## Intoximeter Breath Alcohol Testers

### Key features:

- › Proven accuracy and precision
- › Light and ergonomic
- › Proven on-site durability
- › Certified to Australian Standards 3547:1997
- › Provides near instant results
- › Designed for both left and right handed use



**Alco-Sensor FST**

Product Code: 096-FST-0042

- › Provides a simple, accurate & economical method of determining breath alcohol concentration with evidential grade accuracy
- › Handheld breathalyser with 3 test modes: active, passive and drink sniffer
- › Ability for the tester to view the instrument display whilst testing (patented)
- › Electrochemical fuel cell sensor
- › Leading handheld breathalyser in the market
- › Life span of 8-10 years



**Alco-Sensor V**

Product Code: 096-ASV-0037

- › Advanced, handheld breathalyser with 7000 test memory
- › 3 test modes: active, passive and drink sniffer
- › Ability for the tester to view the instrument display whilst testing the subject
- › Unique lever and snap mouthpiece diverts the subjects breath away from the operator during the sample collection process
- › Available as a stand alone device or with printer/software options
- › Printer package includes device and DP-102 Impact Printer for printing instant, hard copy results
- › Life span of 8-10 years

# FAQ's

## **1. Are Pathtech able to conduct the testing at my workplace or organisation?**

Pathtech are a supplier of drug and alcohol testing devices and are not able to physically conduct the testing at your workplace or organisation. We do nonetheless, have relationships with a range of testing providers right across Australia who test using products from the Pathtech range and therefore, we can put you in contact with the best testing provider for your workplace or organisation.

## **2. How will I know how to use the testing devices correctly?**

If you are planning on conducting your drug and alcohol testing directly, Pathtech will provide you with full product training to ensure you know how to use your devices correctly. This training can be undertaken online through our training portal or alternatively can be conducted via a phone conference or face to face if required. Following your training, you will be provided with a certificate of completion for your records. The Pathtech Drug Detection Team can also assist with any after support as required.

## **3. Can a donor eat or drink before taking the test?**

No. Ensure that they do not eat, drink, smoke or chew anything at least 10 minutes before doing the test

## **4. Can Pathtech assist if I am wanting to engage a testing provider rather than test directly?**

Certainly. Pathtech have a relationship with a range of testing providers right across Australia who test using products from the Pathtech range and can put you in contact with the best testing provider for your workplace or organisation.

## **5. I already use a testing provider. Are Pathtech able to supply testing devices to them?**

Pathtech currently supply drug and alcohol testing devices to a large number of Testing Providers across Australia. If your Provider does not currently use Pathtech products, please encourage them to contact Pathtech to see how they can purchase devices. Alternatively, Pathtech are able to sell to your workplace or organisation directly.

## **6. Who should I contact if there is an issue with a purchased testing device?**

In the very unlikely event that there is an issue with a testing device purchased from Pathtech, please contact the Pathtech Drug Detection Team who will work with you to identify and best rectify the issue.

## **7. Do any of your testing devices have an expiry?**

The Securetec DrugWipes have up to a 24-month expiry, whilst our Urine Cups have up to an 18-month expiry. There is no expiry on the Intoximeter Breathalysers.

## **8. How many DrugWipes are in a box?**

25

## **9. How many people should I test if I was performing random tests?**

Approximately 10% of your workforce once per month is the industry standard. Testing smaller amounts on different days, at different times and on different shifts is more effective than testing a large amount less frequently.

## **10. Do Pathtech provide posters and reference material to place around the site and in staff common areas?**

Instructional and Awareness posters are available in various sizes to enable communication

### 11. How long will I need to wait to receive any order placed for testing devices?

The Pathtech warehouse is based in Melbourne, Australia, enabling quick dispatch of orders. Orders are usually shipped within 24 hours of an order confirmation being received, and should arrive to site within 1–3 working days dependent upon your location within Australia.

### 12. How often do the Intoximeter Breathalysers need to be calibrated?

Breathalysers need to be calibrated every 6 months, regardless of the number of tests conducted within this period, as per the Australian Standards. Pathtech's Service Laboratory is able to perform this calibration. Contact your Account Manager to find out how to book your breathalyser in for calibration

### 13. Can the DrugWipe be used to conduct testing on site?

The DrugWipe is ideal for on-site "on the spot" testing within most external environments due to it requiring minimal saliva, its efficiency, size and portability.

### 14. Do your urine cups have adulterants?

Yes – both the 6, 7 and 13 panel Urine Drug Cups have adulterant screening plus temperature.

### 15. How do I store the DrugWipes?

Incorrect storage conditions, such as high temperatures, will damage the test. Avoid temperatures in excess of 40 °C. Damage to the test may occur.

- ▶ 5 - 40 °C - Use DrugWipe within this temperature range.
- ▶ 5 - 25 °C - Only store DrugWipes within this temperature range.

### 16. What do I do if I get a not-negative result?

Upon receipt of a not-negative result from any saliva or urine screening device, a secondary or confirmatory test must be performed (as per Australian Standards). We offer a Confirmatory Saliva Collection Kit or alternatively the test can be performed by health care professional at a Pathology Clinic or Medical Centre. Please contact the Pathtech Drug Detection Team for advice.

### 17. Do I need accredited training to become a Drug and Alcohol tester for a pre-screen only?

Pathtech offer end to end training (non-accredited) on how to use the DrugWipe to conduct a saliva drug test. A certificate of competency will be issued upon successful completion. If you would like to take the specimen collectors course, we can provide some recommendations for registered training organisations that offer this course. We also offer training on our other products, such as: Breathalyser and Urine.

### 18. What will and won't show up on a drug test?

Common prescription / over the counter medication **will show**: Codeine, Pholcodine (cough syrups), Benzodiazepines (valium, lorazepam), Dextroamphetamine (Adderall), Sudafed, Duromine (weight loss)

Common prescription/over the counter medication that **won't show**: Ibuprofen, Paracetamol (Panadol), Antihistamines, Diabetic medication, Heart medication, Cholesterol tablets, Contraceptive pills, Anti-Depressants, Methylphenidate (Ritalin)



For further information on our extensive range of saliva testing, urine testing, alcohol testing and surface testing, visit [www.pathtech.com.au](http://www.pathtech.com.au) or call our team on 1800 069 161.



### Extensive Industry Experience

Pathtech are Australia's largest supplier of Drug Detection Devices and have extensive experience working across a range of Industries and Business types to support their drug and alcohol testing including:

- › Police
- › Mining
- › Engineering
- › Manufacturing
- › Transport
- › Corrective Services
- › Healthcare
- › Aviation
- › Energy
- › Oil and Gas
- › Sugar, Pulp and Paper Mills
- › Abattoirs
- › Wind Farms and Power Stations
- › Construction
- › Local Government and Councils
- › Customs and Border Force
- › Real Estate and Property Management
- › Housing Departments and Organizations
- › Safety Supply Companies
- › Drug and Alcohol Testing Services

Contact the Pathtech team  
Phone 1800 069 161 | Email [drugwipe@pathtech.com.au](mailto:drugwipe@pathtech.com.au)  
[pathtech.com.au/products/drug-alcohol-testing/](http://pathtech.com.au/products/drug-alcohol-testing/)



**Pathtech**<sup>™</sup>  
First Choice In Science