

# Eliminate Drug and Alcohol Abuse at your Workplace with Pathtech



## Pathtech Workplace Drug and Alcohol Detection Range

Contact the Pathtech team  
Phone 1800 069 161 | Email [drugwipe@pathtech.com.au](mailto:drugwipe@pathtech.com.au)  
[pathtech.com.au/products/drug-alcohol-testing/](http://pathtech.com.au/products/drug-alcohol-testing/)



**Pathtech**  
*First Choice In Science*

# Up to 15%

of workplace injuries worldwide are attributable to drug and alcohol use



# Around 60%

of individuals who consume drugs and alcohol at harmful levels are in full time employment



Alcohol and other drugs cost Australian workplaces an estimated

# \$6 billion

per year in lost productivity

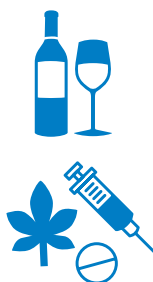


Half of Australian workers drink at harmful levels,

# 13%

 use cannabis

# 4%

 use amphetamines

# 1 in 10

workers says they have experienced the negative effects associated with a co-worker's misuse of alcohol



Under the duty of care provisions in the OH&S Act, Employers must provide a safe workplace for their employees. One of the most effective ways that employers can deal with potential drug and alcohol abuse and protect their employees is to develop and implement a workplace drug and alcohol policy.

### Pathtech can help

Pathtech empowers employers to identify and eliminate the use of drugs and alcohol in the workplace by offering the very best detection devices available in the market.

**This includes Australia's number 1 selling saliva screening device, the Securetec DrugWipe®**, which Pathtech supply to every Australian Police jurisdiction for random roadside drug screening ("Drug-Buses"). Our expansive and high quality range also includes Intoximeter Breathalysers and Proscreen Urine Test Cups.

Our devices can be used as part of an internal "in-house" testing program, or alternatively, provided for use by an existing testing provider.

The Pathtech Team will work closely with you to identify which device best suits your requirements. Our team of dedicated experts will assess your business and make a considered and informed recommendation. We then provide detailed product training, and continued after sales support.

With existing clients that include government departments, mining, manufacturing, building, construction and customs, you can be confident in Pathtech's experience and dedication to providing the very best devices to create safe, drug and alcohol free workplaces.

1. Australian Drug Foundation. Drug Info- Alcohol and Drugs in the Workplace.

2. Guidelines for Drugs, Alcohol and The Workplace. WorkCover Corporation of South Australia.

# The Pathtech Device Range

Pathtech are able to supply saliva or urine based drug detection screening devices and breath alcohol breathalysers. Each device has unique benefits, which are featured in the table below:

Method	Collection	Device	Detection Time	Drugs / Alcohol Detected	Key Benefits
Saliva	Involves collection of a sample of saliva from inside the mouth using a swab or similar	Securetec DrugWipe (page 4)	8 minutes	Amphetamines / methamphetamines, cannabis (THC), cocaine, opiates & benzodiazepines 6S only	<ul style="list-style-type: none"> <li>▶ As used by the Australian Police for roadside drug screening</li> <li>▶ Requires only a small amount of saliva (wipe down tongue)</li> <li>▶ Ease of sample collection</li> <li>▶ Overall reliability greater than 95%</li> <li>▶ Ability to detect even small doses of cannabis</li> </ul>
Urine	Involves the employee producing a urine sample into a sterile tamper proof container	Proscreen Urine Test Cups (page 5)	2 minutes	Amphetamines / methamphetamines, cannabis (THC), cocaine, opiates & benzodiazepines  14 panel cup: As above plus oxycodone, barbiturates, propoxyphene, morphine, methadone, MDMA, buprenorphine, phencyclidine and tricyclic antidepressants	<ul style="list-style-type: none"> <li>▶ Simple and easy to use. Single step</li> <li>▶ Build in specimen validity test to defeat specimen adulteration</li> </ul>
Breath	Involves the employee exhaling into a usually hand held breathalyser	Intoximeter Breathalysers (page 6)	Less than 1 minute	Alcohol	<ul style="list-style-type: none"> <li>▶ Over 70 years experience</li> <li>▶ Light and ergonomic</li> <li>▶ Certified to Australian Standards AS3547</li> </ul>
Surface	Involves using a swab to wipe a surface	Securetec DrugWipe (page 4)	8 minutes	Amphetamines / methamphetamines, cannabis (THC), cocaine & opiates	<ul style="list-style-type: none"> <li>▶ Trace detection on all surfaces</li> </ul>

The Pathtech Drug Detection Team will work closely with you to determine the very best detection device or devices based on the requirements of your workplace.

# Saliva versus Urine?

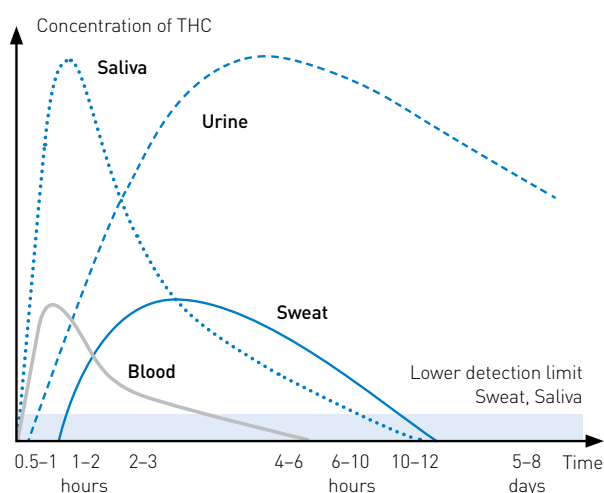
## Which is best for your Workplace?

	Saliva	Urine
<b>Drugs that can be detected</b>	<ul style="list-style-type: none"> <li>Amphetamines / methamphetamines, cannabis (THC), cocaine, opiates &amp; 6S only benzodiazepines</li> </ul>	<ul style="list-style-type: none"> <li>Amphetamines / Methamphetamines, Cannabis (THC), Cocaine, Opiates &amp; Benzodiazepines, Oxycodone, Barbiturates, Propoxyphene, Morphine, Methadone, MDMA &amp; Buprenorphine</li> </ul>
<b>Detection time-frames</b>	<ul style="list-style-type: none"> <li>Detects recent drug use – up to 24 hours</li> <li>Provides a result in 8 minutes</li> </ul>	<ul style="list-style-type: none"> <li>Detects drugs taken in the last 1–5 days</li> <li>Provides results in 1–2minutes</li> </ul>
<b>Testing procedure</b>	<ul style="list-style-type: none"> <li>Requires a wipe down the tongue – only small volume of saliva is required</li> <li>Least invasive test method</li> </ul>	<ul style="list-style-type: none"> <li>Involves the employee producing a urine sample into a sterile tamper proof container</li> </ul>
<b>Ease of sample collection</b>	<ul style="list-style-type: none"> <li>Samples are easily collected. Very little chance of sample adulteration</li> </ul>	<ul style="list-style-type: none"> <li>As per Australian Standards – sample collection must be witnessed</li> </ul>
<b>Applications</b>	<ul style="list-style-type: none"> <li>Random, reasonable cause, post accident and post rehabilitation testing</li> <li>Provides an indication of recent drug use or whether “fit for work”</li> </ul>	<ul style="list-style-type: none"> <li>Pre employment, random, reasonable cause, post accident and post rehabilitation testing</li> <li>Provides a history of drug use</li> </ul>

### Testing Methods:

#### Time windows for detection of Cannabis / THC

Subject to the moment of testing after the consumption



Test results	0.5-1 hrs	1-2 hrs	2-3 hrs	4-6 hrs	6-10 hrs	10-12 hrs	5-8 days
Saliva	+	+	+	+	-	-	-
Sweat	-	+	+	+	+	+	-
Urine	-	+	+	+	+	+	+
Blood	+	+	+	-	-	-	-

These results are guidelines which can vary depending on individual constitution, quality, frequency and intensity of consumption.

### Drug and Metabolites

	Saliva	Urine
<b>Meth / Amphetamines</b>	Up to 24 hours	2-4 days
<b>Benzodiazepines</b>	6 hours	3-8 days
<b>Cocaine and Metabolites</b>	Up to 15 hours	2-3 days
<b>Codeine and Morphine</b>	6 hours	2-3 days
<b>Opiates</b>	Up to 21 hours	2-3 days
<b>Cannabis / Marijuana (THC)</b>	6 hours	10-30 days

The Pathtech Team recommends saliva based devices as a preferred method to detect potential drug abuse at your workplace.

- Saliva drug testing can detect drugs anytime, from immediately after the most recent use to up to 24 hours after use. By comparison, urine cannot accurately determine if drug use was recent or days prior, therefore making saliva superior for post-incident testing.
- Saliva testing is easier and not prone to adulteration. The collection procedure is also less invasive than other forms of drug testing.

# Saliva Drug Testing

## Securetec DrugWipes

### Key features:

- › Number 1 selling saliva testing device in Australia
- › Device used by all Australian Police jurisdictions for roadside drug screening
- › Detects current and recent drug use
- › Requires only a small amount of saliva – just a wipe down the tongue to test
- › Fast test results – available in 8 minutes
- › Accurate, with an overall reliability greater than 95%
- › Ability to detect even small traces of Cannabis, with detection levels for cannabis / THC at 10ng/ml
- › Easy to read – has a distinctive test line which appears upon the presence of drugs, with a built in control line
- › Up to 24 month expiry on devices

Pathtech are able to supply 2 different Securetec DrugWipes® based on the specific drugs your workplace want to test for.



**DrugWipe 5S**

For the detection of amphetamines / methamphetamines, cannabis THC, cocaine and opiates



**DrugWipe 6S**

For the detection of amphetamines / methamphetamines, cannabis THC, cocaine, opiates and benzodiazepines

## DrugWipe® S – Saliva Tests

The results of traffic checks in many countries confirm the efficiency of multi-parameter DrugWipe® S tests. In particular, this can be seen after evaluating a large deployment of saliva drug testing (Nature One, Germany 2011):

Types of drugs		Can	Amp/Met	Coc	Opi
Sensitivity	[%]	94	100	100	100
Specificity	[%]	100	99	98	100
Accuracy	[%]	98	99	98	100

# Urine Drug Testing

## Proscreen Urine Test Cups

### Key features:

- › Assists in the detection of a full range of substances including amphetamines / methamphetamines, cannabis (THC), cocaine, opiates & benzodiazepines
- › Simple and easy to use. Collect the sample and replace the lid
- › Provides results in 2 minutes
- › Built in specimen validity to detect specimen adulteration
- › Certified to Australian Standards (AS4308:2008)
- › Widely used throughout Australia in laboratories, private corporations and government bodies

The Proscreen Urine Drugs of Abuse Test Cup is a one step immunoassay for the detection of drugs and drug metabolites in urine. This assay is used to obtain visual, qualitative results and is intended as a screening device only.

Also available in other cup configurations including: 14-Panel and 7-Panel to test for additional substances such as, Phencyclidine, Tricyclic Antidepressants and K2 (Synthetics).



Proscreen Urine Test Cups



ToxCup Urine Test



Eco Cup Urine Test

# Breathalyser

## Alcohol Testing

### Intoximeter Breath Alcohol Testers

#### Key features:

- › Proven accuracy and precision
- › Light and ergonomic
- › Proven on-site durability
- › Certified to Australian Standards 3547:1997
- › Provides near instant results
- › Designed for both left and right handed use



**Alco-Sensor FST**

- › Provides a simple, accurate & economical method of determining breath alcohol concentration with evidential grade accuracy
- › Handheld breathalyser with 3 test modes: active, passive and drink sniffer
- › Ability for the tester to view the instrument display whilst testing (patented)
- › Electrochemical fuel cell sensor
- › Leading handheld breathalyser in the market
- › Life span of 8-10 years



**Alco-Sensor V**

- › Advanced, handheld breathalyser with 7000 test memory
- › 3 test modes: active, passive and drink sniffer
- › Ability for the tester to view the instrument display whilst testing the subject
- › Unique lever and snap mouthpiece diverts the subjects breath away from the operator during the sample collection process
- › Available as a stand alone device or with printer/software options
- › Printer package includes device and DP-102 Impact Printer for printing instant, hard copy results
- › Life span of 8-10 years

# Drug and Alcohol Starter Kits

## Drug and Alcohol Starter Kits

### Key features:

- › Ideal for workplaces looking to introduce drug and alcohol screening for the first time or for small to medium sized workplaces testing in smaller numbers
- › Offer great cost savings when compared to purchasing single devices
- › Includes our most popular Intoximeter Breathalyser (Alco-Sensor FST) and either saliva or urine based drug screening devices

### Drug and Alcohol Starter Kit – Saliva 5S

- › For the detection of alcohol, cannabis, opiates, cocaine, amphetamines / methamphetamines via a saliva sample
- › Starter Kit includes: 10 x saliva DrugWipe 5S, 1 x Intoximeter FST Breathalyser and 100 x Intoximeter FST Mouthpieces

### Drug and Alcohol Starter Kit – Saliva 6S

- › For the detection of alcohol, cannabis, opiates, cocaine, amphetamines / methamphetamines and benzodiazepines via a saliva sample
- › Starter Kit includes: 10 x saliva DrugWipe 6S, 1 x Intoximeter FST Breathalyser and 100 x Intoximeter FST Mouthpieces

### Drug and Alcohol Starter Kit – Urine

- › For the detection of alcohol, cannabis, opiates, cocaine, amphetamines / methamphetamines and benzodiazepines via a urine sample
- › Starter Kit includes 25 x Proscreen 6-panel cups, 1 x Intoximeter FST Breathalyser and 100 x Intoximeter FST Mouthpieces



Drug and Alcohol Starter Kit



# Surface Drug Testing

## Property Screening Pack

For the detection of methamphetamines on surfaces in residential and commercial properties, workplaces, vehicles and more.

Property Screening Pack includes:

- › 1x Pathtech Cooler Bag (Fits your DrugWipes, accessories & paperwork)
- › 5x DrugWipe 1A Surface Testing Devices
- › 1x Quick Reference Guide (Refresher on DrugWipe usage)
- › 2x Nitrile Gloves
- › 2x Underpads
- › 5x 10x10cm Cardboard cutouts



**Property Screening Pack**  
Methamphetamines (Ice)

## DrugWipe 1A

Test surfaces for the presence of Amphetamines/ Methamphetamines/ Ecstasy with the Securetec DrugWipe 1A device.

- › Easy to use
- › Provides a visible, qualitative results within 8 minutes
- › Accurate
- › Ideal for meth testing of properties, cars and workplaces



**DrugWipe 1A**

## DrugWipe 5F

- › Test surfaces for the detection of cannabis, opiates, cocaine and amphetamines / methamphetamines
- › Provides a visible, qualitative result within 8 minutes
- › Currently used by Australian Customs

The Securetec DrugWipe 5F can detect the presence of illegal substances by wiping surfaces such as:

- › Mobile phones
- › Keyboards
- › Steering wheels



**DrugWipe 5F**

# FAQ's

## **1. Are Pathtech able to conduct the testing at my workplace or organisation?**

Pathtech are a supplier of drug and alcohol testing devices and are not able to physically conduct the testing at your workplace or organization. We do nonetheless, have relationships with a range of testing providers right across Australia who test using products from the Pathtech range and therefore, we can put you in contact with the best testing provider for your workplace or organisation.

## **2. What Industries do Pathtech currently supply testing devices to?**

Pathtech currently supply drug and alcohol testing devices to a wide range of Industries, including police, aviation, mining, health-care, transport and construction. For a full list of the Industries we currently work with, see page 8.

## **3. Can Pathtech assist if I am wanting to engage a testing provider rather than test directly?**

Certainly. Pathtech have a relationship with a range of testing providers right across Australia who test using products from the Pathtech range and can put you in contact with the best testing provider for your workplace or organisation.

## **4. I already use a testing provider. Are Pathtech able to supply testing devices to them?**

Pathtech currently supply drug and alcohol testing devices to a large number of Testing Providers across Australia. If your Provider does not currently use Pathtech products, please encourage them to contact Pathtech to see how they can purchase devices. Alternatively, Pathtech are able to sell to your workplace or organisation directly.

## **5. How will I know how to use the testing devices correctly?**

If you are planning on conducting your drug and alcohol testing directly, Pathtech will provide you with full product training to ensure you know how to use your devices correctly. This operator training is provided **free of charge** and can be conducted via a phone conference or face to face if required. Following your training, you will be provided with a certificate of completion for your records. The Pathtech Drug Detection Team can also assist with any after sales support as required.

## **6. Who should I contact if there is an issue with a purchased testing device?**

In the very unlikely event that there is an issue with a testing device purchased from Pathtech, please contact the Pathtech Drug Detection Team who will work with you to identify the issue and how to best rectify this issue.

## **7. Do any of your testing devices have an expiry?**

The Securetec DrugWipes have up to a 24 month expiry, whilst the Proscreen Urine Cups have up to a 12 month expiry. There is no expiry on the Intoximeter Breathalysers.

## **8. How long will I need to wait to receive any order placed of testing devices?**

The Pathtech warehouse is based in Melbourne, Australia, enabling quick dispatch of orders. Orders are shipped within 24 hours of an order confirmation being received, with devices then arriving within 1-3 working days based on your location within Australia.

### **9. Is there a limit to the quantity of devices I can purchase at any one time?**

Pathtech are able to work with all sized workplaces and organisations to supply drug and alcohol testing devices. There is no limit on the minimum or maximum quantity of devices that can be purchased at any one time. *(refer question 8)*

### **10. What is the price for the different testing devices?**

The price for the different devices within the Pathtech range is based on the number of devices you are wishing to purchase and purchase frequency. We are mindful that many workplaces and organisations have a budget to adhere to and will work with you to find the very best device solution with this budget in mind. Please contact the Pathtech Drug Detection Team for a tailored price based on your requirements.

### **11. How often do the Intoximeter Breathalysers need to be calibrated?**

The Intoximeter Breathalysers need to be calibrated every 6 months, regardless of the number of tests conducted within this period as per the Australian Standards. Pathtech's Service Laboratory is able to perform this calibration.

### **12. Can the DrugWipe be used to conduct testing on site?**

The DrugWipe is ideal for on-site "on the spot" testing within most external environments due to its size and portability.

### **13. Do your urine cups have adulterants?**

Yes – both the 6 and 14 panel Proscreen Urine Drug Cups have 5 adulterants plus temperature.

### **14. How do I conduct a confirmatory test?**

Upon receipt of a non-negative result from any saliva or urine screening device, a secondary or confirmatory test must be performed (as per Australian Standards). This can be performed by contacting an approved confirmatory laboratory. Please contact the Pathtech Drug Detection Team for advise on your closest confirmatory laboratory.

### **15. Who should I contact for further information?**

If you would like further information on any of the devices within the Pathtech range, please contact a member of the Drug Detection Team on 1800 069 161 or email [drugwipe@pathtech.com.au](mailto:drugwipe@pathtech.com.au)

In addition to our extensive saliva testing, alcohol testing, urine testing and surface testing devices, Pathtech are also able to offer drug container systems and narcotic identification test kits.

For further information on drug container systems or narcotic identification kits, visit our website at [www.pathtech.com.au/products/drug-alcohol-testing/](http://www.pathtech.com.au/products/drug-alcohol-testing/) or call our team on 1800 069 161.



### Extensive Industry Experience

The Pathtech Team has extensive experience working across a wide range of industries to support their workplace drug and alcohol testing.

#### These Industries include:

- › Police
- › Mining
- › Engineering
- › Manufacturing
- › Transport
- › Corrective services
- › Healthcare
- › Aviation
- › Energy
- › Oil and gas
- › Sugar, pulp and paper mills
- › Councils
- › Abattoirs
- › Wind farms
- › Power stations
- › Ports
- › Construction
- › Safety supply companies
- › Drug and alcohol providers

Contact the Pathtech team  
Phone 1800 069 161 | Email [drugwipe@pathtech.com.au](mailto:drugwipe@pathtech.com.au)  
[pathtech.com.au/products/drug-alcohol-testing/](http://pathtech.com.au/products/drug-alcohol-testing/)



**Pathtech**  
First Choice In Science